

The Good Tool Group

JEMIMS CASCADE INC.



DOBCO
EQUIPMENT LTD

Ontario's Largest
Pneumatic & Hydraulic Tool Distributor

1-2430 Lucknow Drive, Mississauga, Ontario L5S 1V3. Tel: 905-672-5557 Fax: 905-672-5559
Email: sales@dobcoeqp.com www.dobcoeqp.com

NUTRUNNER Attachments

DOBCO
EQUIPMENT LTD

Please Contact Your Preferred
Power Tool Distributor, or

The Good Tool Group
JEMMS
CASCADE INC.

Phone: 248-526-8100

E-Mail: goodtool@jemms-cascade.com

Fax: 248-526-0019

Mailing Address: 1886 Larchwood Drive
Troy, Michigan 48083



**BUILDING QUALITY ATTACHMENTS
IN THE USA SINCE 1988**

Visit Us On The Web, At:
www.jemms-cascade.com

We work with the following power tool manufacturers or their distributors:

A.A.G.
Techmotive

American Assembly

Atlas-Copco

Bosch

Chicago Pneumatics

Desoutter

Georges Renault

Cooper

Cleco

Rotor

Automation

Ingersoll Rand
ARO

Makita

Sioux

Stanley

Aimco

Uryu

DOBCO
EQUIPMENT LTD

In-house design staff creates custom tools for special applications.

1886 Larchwood Dr. • Troy, MI 48083
Fax (248) 526-0019 • www.jemms-cascade.com

(248) 526-8100

Table of Contents

Patents	4
Problems and Solutions	5
Sample Applications	6
Socket Options	6
Offset Heads	7
Light Duty Torques	8
Standard Duty Torques	9
Extra Duty Torques	10
Heavy Duty Torques	11
Series 5 X-tra Heavy Duty Torques	12
Attachment Quote Request Form	13-14
Hold-and-Drives	15
Hold-and-Drive Quote Request Form	17-18
Multi Spindle Nut Starter	19
Whip-less Extensions	20
Whip-less Extension Variations	21
Sliding Spindle	22
Weather Strip Attachment	23
Indexable Housing	24
In-line	25
20°	25
In-Line / 20° Attachments Quote Request Form	27-28
Tube Nuts	29
Tube Nut Variations	30
Tube Nut Quote Request Form	31-32
In-line / 20° Tube Nut Quote Request Form	33-34
Safety Sleeves	35
Mounting Procedures	36
Recommendations for Motor Types	37
Maintenance Procedures	37
Warranty	38



PATENTED:

- Tube Nut attachment
- Slip-on collar
- Automatic tie-rod adjustment tool
- Weather Strip attachment
- Whip-less extension
- Safety Sleeve

ASSEMBLY LINE PROVEN TO PROVIDE:

- Highest cycle capability
- Most consistent torque repeatability
- Highest torque load capability
- Lowest cycle cost
- Variety
 - Attach, without welding, to any power tool
 - Air or D.C. electric
 - Hand held or fixtured
 - Torque control or monitored
- Specialized sizes to fit most any restricted space
- Consistent world class quality
- Hex sizes to 5" / torque up to 1,000 ft. lb.

DISTRIBUTED BY:

- Major power tool manufacturers or their distributors
- Fastening system experts
- Jemms-Cascade, Inc.

EXCLUSIVE:

Only tooling of this type independently bench tested to 250,000+ cycles by power tool manufacturers and L.T.U. (Ford Certification).

In-house design staff creates custom tools for special applications.

Problems with Ordinary Attachments (Crowsfoot, Flat Ratchet)

1. Inconsistent torque
2. High maintenance
3. Lead time
4. Availability for your specific application

Jemms Has Solved These Problems By Manufacturing Precision Units That Provide:

1. 250,000 cycle capability*
2. Most consistent torque repeatability
3. Highest torque capabilities (up to 2,000 ft. lb.)
4. Lowest maintenance
5. Lowest overall cycle cost
6. Responsive turn around time
7. Mount to the power tool of your choice without welding
or the need of special adapters
8. Compact standardized sizes for most applications, as well
as the ability to handle special applications
9. Plant support with technical information and replacement parts service



**CUSTOMER SATISFACTION IS OUR PRIMARY OBJECTIVE,
WHICH WE OBTAIN THROUGH PERFORMANCE.**

See Warranty for Details



**NUTRUNNER
Attachments**

In-house design staff creates custom tools for special applications.

1886 Larchwood Dr. • Troy, MI 48083
Fax (248) 526-0019 • www.jemms-cascade.com

(248) 526-8100

Sample Applications



Tube Nut

Brakelines, power steering, hydraulic connections, garden hose connections (washers), wheel spokes, tie rod adjustment

Attachment

Distributor cap, axle backing plate, flange or tight casting applications

Hold and Drive

Sway bar, ball joint, stabilizer bar, chassis assembly

Indexing Head

Aerospace applications that require a tool to access parts from several directions, wing assembly

20°

Doors on/off, hood secure, fan blade assembly

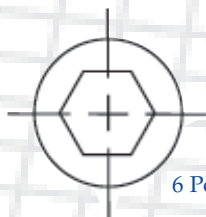
Inline Heads

Lower profile than standard attachments attached with a right angle, doors on/off

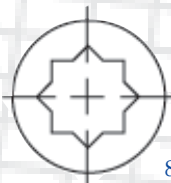
Hold and Drive Nut

Used to connect a tubenut fitting to a coupler

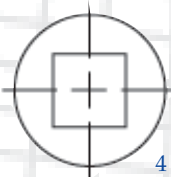
Socket Options



6 Point Hex

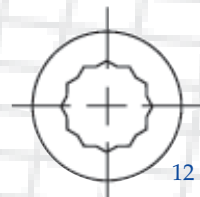


8 Point Square



4 Point Square

- Male
- Female



12 Point Hex



Surface Drive

- Bit Holders
- Socket Extensions
- Magnetic Sockets
- Retaining Grooves, to Hold Special Adapters
- Fast Lead

The Good Tool Group

JEMMS

CASCADE INC.

Our tools can be attached to anything from standard air, pulse, to electric and battery tools.

In-house design staff creates custom tools for special applications.



Offset Heads



NUTRUNNER Attachments

- Highest cycle capability
 - Most consistent torque Repeatability
- Tools Built To Stand up to 2,000 N.M.
- Specialized sizes to fit most restricted spaces
 - Built-in Lube Points
 - Fits to Power Tool of Your Choice

The Good Tool Group
JEMMS
CASCADE INC.

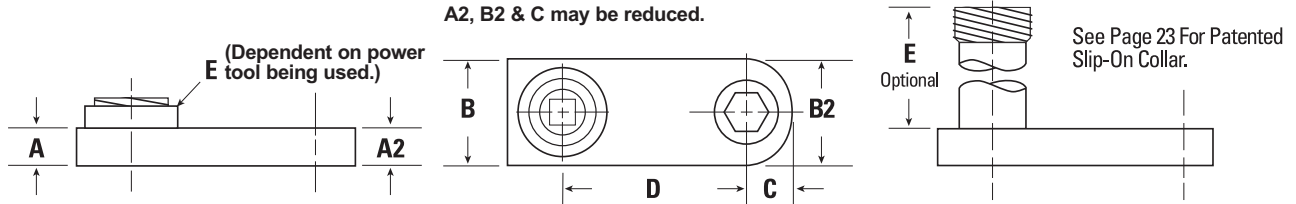
Test Our Adaptability

In-house design staff creates custom tools for special applications.

1886 Larchwood Dr. • Troy, MI 48083
Fax (248) 526-0019 • www.jemms-cascade.com

(248) 526-8100

Light Duty Torques



In-house design staff creates custom tools for special applications.

To 140 In. lb.

Part No.	Max Torque Output		Hex Size Range:**		A		B May Be Reduced		C		D		Sq. Dr. Up To
	n.m.	in. lb.	mm	inch	mm	inch	mm	inch	mm	inch	mm	inch	
302125__	10	90	6-7	1/4-5/16	9.5	3/8	25.4	1	10.4	.410	30.5	1.200	1/4
302150__	13	120	6-7	1/4-5/16	9.5	3/8	25.4	1	10.4	.410	30.5	1.200	1/4
302175__	15	140	6-7	1/4-5/16	10.3	13/32	25.4	1	10.4	.410	30.5	1.200	1/4
303125__	10	90	6-8	1/4-11/32	9.5	3/8	25.4	1	10.8	.425	33.0	1.300	1/4
303150__	13	120	6-8	1/4-11/32	9.5	3/8	25.4	1	10.8	.425	33.0	1.300	1/4
303175__	15	140	6-8	1/4-11/32	10.3	13/32	25.4	1	10.8	.425	33.0	1.300	1/4
304125__	10	90	6-10	1/4-3/8	9.5	3/8	25.4	1	11.6	.456	35.6	1.400	1/4
304150__	13	120	6-10	1/4-3/8	9.5	3/8	25.4	1	11.6	.456	35.6	1.400	1/4
304175__	15	140	6-10	1/4-3/8	10.3	13/32	25.4	1	11.6	.456	35.6	1.400	1/4
305125__	10	90	6-11	1/4-7/16	9.5	3/8	25.4	1	12.1	.475	38.1	1.500	1/4
305150__	13	120	6-11	1/4-7/16	9.5	3/8	25.4	1	12.1	.475	38.1	1.500	1/4
305175__	15	140	6-11	1/4-7/16	10.3	13/32	25.4	1	12.1	.475	38.1	1.500	1/4
502125__	10	80	6-7	1/4-5/16	9.5	3/8	25.4	1	10.4	.410	61.0	2.400	1/4
502150__	13	110	6-7	1/4-5/16	9.5	3/8	25.4	1	10.4	.410	61.0	2.400	1/4
502175__	15	130	6-7	1/4-5/16	10.3	13/32	25.4	1	10.4	.410	61.0	2.400	1/4
503125__	10	80	6-8	1/4-11/32	9.5	3/8	25.4	1	10.8	.425	66.0	2.600	1/4
503150__	13	110	6-8	1/4-11/32	9.5	3/8	25.4	1	10.8	.425	66.0	2.600	1/4
503175__	15	130	6-8	1/4-11/32	10.3	13/32	25.4	1	10.8	.425	66.0	2.600	1/4
504125__	10	80	6-10	1/4-3/8	9.5	3/8	25.4	1	11.6	.456	71.1	2.800	1/4
504150__	13	110	6-10	1/4-3/8	9.5	3/8	25.4	1	11.6	.456	71.1	2.800	1/4
504175__	15	130	6-10	1/4-3/8	10.3	13/32	25.4	1	11.6	.456	71.1	2.800	1/4
505125__	10	80	6-11	1/4-7/16	9.5	3/8	25.4	1	12.1	.475	76.2	3.000	1/4
505150__	13	110	6-11	1/4-7/16	9.5	3/8	25.4	1	12.1	.475	76.2	3.000	1/4
505175__	15	130	6-11	1/4-7/16	10.3	13/32	25.4	1	12.1	.475	76.2	3.000	1/4
‡													



‡ Numerous variations are available. If required unit is not listed, contact our plant.

Lubricate once per shift. Check cover plate screws once per shift.

** Hex socket gear can be extended or modified to accept adapters, bits, chucks or magnets.

† Standard dimensions at socket gear can be reduced.

• Specification upon request.

Standard Duty Torques

DOBCO
EQUIPMENT LTD

NUTRUNNER Attachments



In-house design staff creates custom tools for special applications.

To 20 ft.lb./27NM													
Part No.	Max Torque Output		Hex Size Range:**		A		B		C		D		Sq. Dr. Up To
	n.m.	ft. lb.	mm	inch	mm	inch	mm	inch	mm	inch	mm	inch	
200250__	24	18	6-15	1/4-5/8	12.7	1/2	31.8	1 1/4	15.2	.600	25.4	1.500	1/2
305250__	28	21	6-11	1/4-7/16	12.7	1/2	25.4	1	12.1	.475	38.1	1.500	3/8
306235__	24	18	6-13	1/4-1/2	12.7	1/2	31.8	1 1/4	12.8	.503	40.6	1.609	3/8
306250__	28	21	6-13	1/4-1/2	12.7	1/2	31.8	1 1/4	12.8	.503	40.6	1.609	3/8
307235__	24	18	6-13	1/4-17/32	12.7	1/2	31.8	1 1/4	13.3	.525	43.2	1.703	3/8
307250__	28	21	6-13	1/4-17/32	12.7	1/2	31.8	1 1/4	13.3	.525	43.2	1.703	3/8
308200__	20	15	6-14	1/4-9/16	12.7	1/2	31.8	1 1/4	14.0	.550	45.7	1.796	3/8
308235__	24	18	6-14	1/4-9/16	12.7	1/2	31.8	1 1/4	14.0	.550	45.7	1.796	3/8
308250__	28	21	6-14	1/4-9/16	12.7	1/2	31.8	1 1/4	14.0	.550	45.7	1.796	3/8
300200__	20	15	6-15	1/4-5/8	12.7	1/2	31.8	1 1/4	15.2	.600	50.8	2.000	3/8-1/2
300235__	24	18	6-15	1/4-5/8	12.7	1/2	31.8	1 1/4	15.2	.600	50.8	2.000	3/8-1/2
300250__	28	21	6-15	1/4-5/8	12.7	1/2	31.8	1 1/4	15.2	.600	50.8	2.000	3/8-1/2
505200__	18	14	6-11	1/4-7/16	12.7	1/2	25.4	1	12.1	.475	76.2	3.000	3/8
505235__	23	17	6-11	1/4-7/16	12.7	1/2	25.4	1	12.1	.475	76.2	3.000	3/8
505250__	27	20	6-11	1/4-7/16	12.7	1/2	25.4	1	12.1	.475	76.2	3.000	3/8
506235__	23	19	6-13	1/4-1/2	12.7	1/2	31.8	1 1/4	12.8	.503	81.3	3.203	3/8
506250__	27	20	6-13	1/4-1/2	12.7	1/2	31.8	1 1/4	12.8	.503	81.3	3.203	3/8
507235__	23	17	6-13	1/4-17/32	12.7	1/2	31.8	1 1/4	12.8	.525	86.7	3.400	3/8
507250__	27	20	6-13	1/4-17/32	12.7	1/2	31.8	1 1/4	13.3	.525	86.7	3.400	3/8
508235__	23	17	6-14	1/4-9/16	12.7	1/2	31.8	1 1/4	14.0	.550	91.4	3.609	3/8
508250__	27	20	6-14	1/4-9/16	12.7	1/2	31.8	1 1/4	14.0	.550	91.4	3.609	3/8
500235__	23	17	6-15	1/4-5/8	12.7	1/2	31.8	1 1/4	15.2	.600	101.6	4.000	3/8-1/2
500250__	27	20	6-15	1/4-5/8	12.7	1/2	31.8	1 1/4	15.2	.600	101.6	4.000	3/8-1/2
600250__	25	19	6-15	1/4-5/8	12.7	1/2	31.8	1 1/4	15.2	.600	101.6	5.000	3/8-1/2
‡													

The Good Tool Group
JEMMS
CASCADE INC.

‡ Numerous variations are available. If required unit is not listed, contact our plant.

Specifications upon request.

** Hex socket gear can be extended or modified to accept adapters, bits, chucks or magnets.

† Standard dimensions at socket gear can be reduced.

Optional bearing pack available.

Lubricate once per shift.

1886 Larchwood Dr. • Troy, MI 48083
Fax (248) 526-0019 • www.jemms-cascade.com

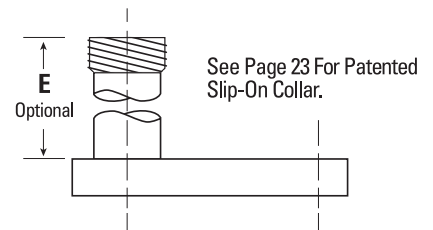
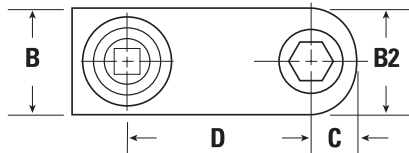
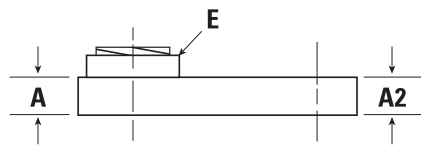
(248) 526-8100

Extra Duty Torques



(Dependent on power tool being used.)

A2, B2 & C may be reduced.



In-house design staff creates custom tools for special applications.

To 39 ft. Lb./52 NM.

Part No.	Max Torque Output		Hex Size Range:**		A		B		C		D		Sq. Dr. Up To
	n.m.	ft. lb.	mm	inch	mm	inch	mm	inch	mm	inch	mm	inch	
3B434312	50	37	6-15	1/4-9/16	12.7	1/2	38.1	1 1/2	15.9	.625	50.8	2.000	1/2
385250__	31	23	6-13	1/4-1/2	12.7	1/2	31.8	1 1/4	13.3	.525	42.3	1.656	3/8
386250__	31	23	6-14	1/4-9/16	12.7	1/2	31.8	1 1/4	14.0	.550	45.1	1.765	3/8
386275__	34	25	6-14	1/4-9/16	14.3	9/16	31.8	1 1/4	14.0	.550	45.1	1.765	3/8
388250__	31	23	6-15	1/4-5/8	12.7	1/2	31.8	1 1/4	15.6	.613	50.8	2.000	3/8-1/2
388300__	48	36	6-15	1/4-5/8	14.3	9/16	31.8	1 1/4	15.6	.613	50.8	2.000	3/8-1/2
5B434312	50	37	6-15	1/4-9/16	12.7	1/2	38.1	1 1/2	15.9	.625	101.6	4.000	1/2
585250__	31	23	6-13	1/4-1/2	12.7	1/2	31.8	1 1/4	13.3	.525	84.6	3.328	3/8
585275__	34	25	6-13	1/4-1/2	14.3	9/16	31.8	1 1/4	13.3	.525	84.6	3.328	3/8
586250__	31	23	6-14	1/4-9/16	12.7	1/2	31.8	1 1/4	14.0	.550	80.1	3.546	3/8
586275__	34	25	6-14	1/4-9/16	14.3	9/16	31.8	1 1/4	14.0	.550	80.1	3.546	3/8
586300__	48	36	6-14	1/4-9/16	14.3	9/16	31.8	1 1/4	14.0	.550	80.1	3.546	3/8
588250__	31	23	6-15	1/4-5/8	12.7	1/2	38.1	1 1/4	15.6	.613	101.6	4.000	3/8-1/2
588275__	35	26	6-15	1/4-5/8	14.3	9/16	38.1	1 1/4	15.6	.613	101.6	4.000	3/8-1/2
588300__	46	34	6-15	1/4-5/8	14.3	9/16	38.1	1 1/4	15.6	.613	101.6	4.000	3/8-1/2
588350__	52	39	6-15	1/4-5/8	15.9	5/8	38.1	1 1/4	15.6	.613	101.6	4.000	3/8-1/2
686250__	28	21	6-14	1/4-9/16	12.7	1/2	38.1	1 1/4	14.0	.550	112.8	5.000	3/8
‡													



‡ Numerous variations are available. If required unit is not listed, contact our plant.

Specifications upon request.

** Hex socket gear can be extended or modified to accept adapters, bits, chucks or magnets.

† Standard dimensions at socket gear can be reduced.

Optional bearing pack available.

Lubricate once per shift.

NUTRUNNER Attachments



In-house design staff creates custom tools for special applications.

To 100 ft. Lb./135 NM.

Part No.	Max Torque Output		Hex Size Range:**		A		B		C		D		Sq. Dr. Up To
	n.m.	ft. lb.	mm	inch	mm	inch	mm	inch	mm	inch	mm	inch	
3M4250__	54	40	6-15	1/4-9/16	12.7	1/2	38.1	1 1/2	16.4	.645	51.8	2.046	3/8-1/2
3M4275__	74	55	6-15	1/4-9/16	14.3	9/16	38.1	1 1/2	16.4	.645	51.8	2.046	3/8-1/2
3M4300__	94	65	6-15	1/4 9/16	14.3	9/16	38.1	1 1/2	16.4	.645	51.8	2.046	3/8-1/2
3M4350__	115	85	6-15	1/4-9/16	15.9	5/8	38.1	1 1/2	16.4	.645	51.8	2.046	3/8-1/2
3M6250__	54	40	6-17	1/4-11/16	12.7	1/2	38.1	1 1/2	17.1	.675	56.0	2.200	3/8-1/2
3M6300__	94	70	6-17	1/4-21/32	14.3	9/16	38.1	1 1/2	17.1	.675	56.0	2.200	3/8-1/2
3M6350__	115	85	6-17	1/4-21/32	15.9	5/8	38.1	1 1/2	17.1	.675	56.0	2.200	3/8-1/2
3M8250__	54	40	6-21	1/4-13/16	12.7	1/2	44.5	1 3/4	19.6	.770	65.8	2.593	1/2-5/8
3M8300__	94	65	6-21	1/4-13/16	14.3	9/16	44.5	1 3/4	19.6	.770	65.8	2.593	1/2-5/8
3M8350__	115	85	6-21	1/4-13/16	15.9	5/8	44.5	1 3/4	19.6	.770	65.8	2.593	1/2-5/8
3M8400__	135	100	6-21	1/4-13/16	17.5	11/16	44.5	1 3/4	19.6	.770	65.8	2.593	1/2-5/8
3M0250__	54	40	6-23	1/4-7/8	12.7	1/2	44.5	1 3/4	21.1	.830	70.0	2.759	1/2-3/4
3M0350__	108	80	6-23	1/4-7/8	15.9	5/8	44.5	1 3/4	21.1	.830	70.0	2.759	1/2-3/4
3M0425__	135	100	6-23	1/4-7/8	17.5	11/16	44.5	1 3/4	21.1	.830	70.0	2.759	1/2-3/4
5M4275__	74	55	6-15	1/4-9/16	14.3	9/16	38.1	1 1/2	16.4	.645	103.6	4.078	3/8-1/2
5M4325__	101	75	6-15	1/4-9/16	15.9	9/16	38.1	1 1/2	16.4	.645	103.6	4.078	3/8-1/2
5M4350__	115	85	6-15	1/4-9/16	15.9	5/8	38.1	1 1/2	16.4	.645	103.6	4.078	3/8-1/2
5M6250__	54	40	6-17	1/4-11/16	12.7	1/2	38.1	1 1/2	17.1	.675	112.0	4.405	1/2-5/8
5M6300__	94	65	6-17	1/4-21/32	14.3	9/16	38.1	1 1/2	17.1	.675	112.0	4.405	1/2-5/8
5M6350__	108	80	6-17	1/4-21/32	15.9	5/8	38.1	1 1/2	17.1	.675	112.0	4.405	1/2-5/8
5M8250__	54	40	6-21	1/4-13/16	12.7	1/2	44.5	1 3/4	19.6	.770	131.7	5.187	1/2-5/8
5M8300__	81	60	6-21	1/4-13/16	14.3	9/16	44.5	1 3/4	19.6	.770	131.7	5.187	1/2-5/8
5M8350__	115	85	6-21	1/4-13/16	15.9	5/8	44.5	1 3/4	19.6	.770	131.7	5.187	1/2-5/8
5M0250__	54	40	6-23	1/4-7/8	12.7	1/2	44.5	1 3/4	21.1	.830	140.0	5.534	1/2-3/4
5M0300__	81	60	6-23	1/4-7/8	14.3	9/16	44.5	1 3/4	21.1	.830	140.0	5.534	1/2-3/4
5M0375__	128	95	6-23	1/4-7/8	15.9	5/8	44.5	1 3/4	21.1	.830	140.0	5.534	1/2-3/4
‡													

‡ Numerous variations are available. If required unit is not listed, contact our plant.

Specifications upon request.

** Hex socket gear can be extended or modified to accept adapters, bits, chucks or magnets.

† Standard dimensions at socket gear can be reduced.

Optional bearing pack available.

Lubricate once per shift.



1886 Larchwood Dr. • Troy, MI 48083

Fax (248) 526-0019 • www.jemms-cascade.com

(248) 526-8100

Series 5 X-tra Heavy Duty Torques



NUTRUNNER Attachments

In-house design staff creates custom tools for special applications.

To 810 ft. Lb./1100 NM.

Part No.	Max Torque Output		Hex Size Range:**		A		B		C		D		Sq. Dr. Up To
	n.m.	ft. lb.	mm	inch	mm	inch	mm	inch	mm	inch	mm	inch	
32/40625__	339	250	22	7/8	22.2	7/8	50.8	2	25	.99	87	3.425	1
32/43600__	271	200	16	5/8	22.2	7/8	38	1 1/2	17.6	.695	57	2.25	Sp.
32/44500__	186	140	18	23/32	20.6	13/16	38	1 1/2	18.8	.74	61	2.4	5/8
32/45350__	125	95	19	3/4	15.9	5/8	44.5	1 3/4	20	.78	66	2.6	5/8
32/45400__	128	92	19	3/4	17.5	11/16	44.5	1 3/4	20	.78	66	2.6	5/8
32/45425__	149	110	19	3/4	17.5	11/16	44.5	1 3/4	20	.78	66	2.6	5/8
32/45500__	186	140	19	3/4	19	3/4	44.5	1 3/4	20	.78	66	2.6	5/8
32/45625__	339	250	19	3/4	22.2	7/8	44.5	1 3/4	20	.78	66	2.6	5/8-Sp.
32/46400__	128	95	20	13/16	17.5	11/16	44.5	1 3/4	20.6	.81	70	2.75	5/8
32/46425__	149	110	20	13/16	20	13/16	44.5	1 3/4	20.6	.81	70	2.75	5/8
32/46500__	186	140	20	13/16	20.6	13/16	44.5	1 3/4	21	.83	70	2.75	5/8
32/47250__	67	50	22	7/8	12.7	1/2	44.5	1 3/4	22	.87	74	2.875	3/4
32/47375__	136	100	22	7/8	15.9	5/8	44.5	1 3/4	22	.87	74	2.875	3/4
32/47425__	149	110	22	7/8	20	13/16	44.5	1 3/4	22	.87	74	2.875	3/4
32/48500__	186	140	25	1	20.6	13/16	50.8	2	23.5	.925	78	3.125	1
32/48625__	339	250	25	1	22.2	7/8	50.8	2	23.5	.925	78	3.125	1
32/48750__	406	300	25	1	25.4	1	50.8	2	23.5	.925	78	3.125	1
32/421675__	372	275	30.15	1 3/16	30	1	63.5	2 1/2	26.7	1.05	91	3.59	1
32/426500__	186	140	38	1 1/2	20.6	13/16	63.5	2 1/2	31.6	1.25	112	4.4	1
32/426600__	271	200	38	1 1/2	22.2	7/8	63.5	2 1/2	31.6	1.25	112	4.4	1
32/426625__	339	250	38	1 1/2	25.4	1	63.5	2 1/2	31.6	1.25	112	4.4	1
32/427625__	339	250	47	1 5/8	25.4	1	63.5	2 1/2	33	1.3	116	4.59	1
32/435250__	61	45	44	1 3/4	12.7	1/2	76	3	34	1.34	150	5.9	1
32/447350__	125	92	76	3	15.9	5/8	114	4 1/2	54	2.125	201	7.9	1
32/447750__	406	300	76	3	25.4	1	114	4 1/2	54	2.125	201	7.9	1
38/1082.5	1100	810	54	2 1/8	57	2 1/4	102	4	51	2	178	7	1



‡ Numerous variations are available. If required unit is not listed, contact our plant.

Specifications upon request.

** Hex socket gear can be extended or modified to accept adapters, bits, chucks or magnets.

† Standard dimensions at socket gear can be reduced.

Optional bearing pack available.

Lubricate once per shift.





Attachment Quote Request Form PAGE 1 of 2

QUOTE NUMBER: _____

DATE: _____

Name: _____

Company: _____

Street or P.O. Box: _____

City: _____

State: _____

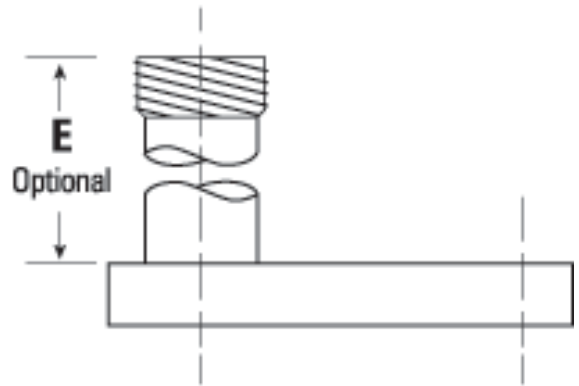
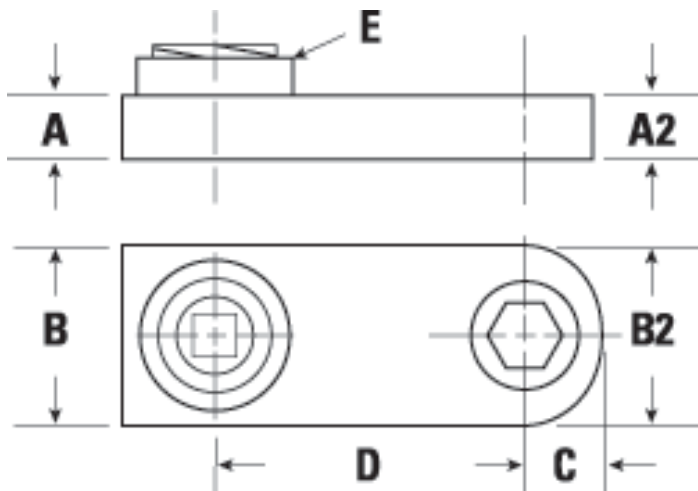
ZIP: _____

Country: _____

Phone: _____

Fax: _____

Email: _____



A		INCHES		MM	A2		INCHES		MM
B		INCHES		MM	B2		INCHES		MM
C		INCHES		MM	Hex Size		INCHES		MM
D		INCHES		MM	Hex	<input type="checkbox"/> 6 Point <input type="checkbox"/> 12 Point Other: _____			
E	Standard: Size Depends on Tool Selected				Hex Magnetized?			<input type="checkbox"/> Yes <input type="checkbox"/> No	
E	Optional Extension	INCHES		MM	If Necessary, Can A Sample of The Part Be Sent for Our Review?			<input type="checkbox"/> Yes <input type="checkbox"/> No	

Attachment Quote Request Form <small>PAGE 2 of 2</small>	QUOTE NUMBER	DATE

Fastener Torque Requirement (Fill in one only):

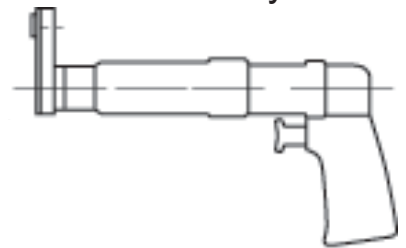
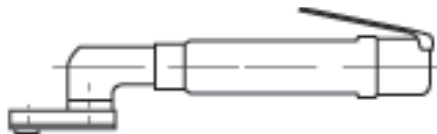
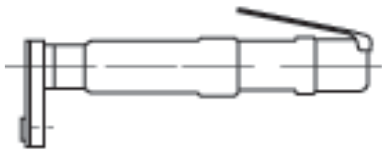
Inch/lb.	Foot/lb.	NM	KG/CM
Is This Fastener Application: <input type="checkbox"/> Hard Joint <input type="checkbox"/> Medium Joint <input type="checkbox"/> Soft Joint			

POWER TOOL PREFERENCE

In-Line (L) Style

Right Angle Style

Pistol Style



SQUARE DRIVE

1/4"

3/8"

1/2"

5/8"

3/4"

1"

Other:

Manufacturer:	
Model Number:	

Air

Electric

Transducerized?

Yes

No

Source:

In-House

Direct

Distributor

Jemms-Cascade

Quantity of Jemms Units to Be Quoted:	<input type="checkbox"/> 12	<input type="checkbox"/> 6	<input type="checkbox"/> 3	Other:
Part Number From Catalog (If Available):	Page Number:			

Notes/Comments/Special Instructions:



Hold-and-Drives

DOBCO
EQUIPMENT LTD



NUTRUNNER Attachments

- Durability
- Precision Machining
- More Compact than Special Right Angle Style
- Enclosed Hold Components Increase Stability and Safety
- Built-in Lubrication Points

Replaces Special Right Angle Designs

The Good Tool Group
JEMMS
CASCADE INC.

Test Our Strength

In-house design staff creates custom tools for special applications.

1886 Larchwood Dr. • Troy, MI 48083
Fax (248) 526-0019 • www.jemms-cascade.com

(248) 526-8100

15



Hold-and-Drive Quote Request Form PAGE 1 of 2

QUOTE NUMBER: _____

DATE: _____

Name: _____

Company: _____

Street or P.O. Box: _____

City: _____

State: _____

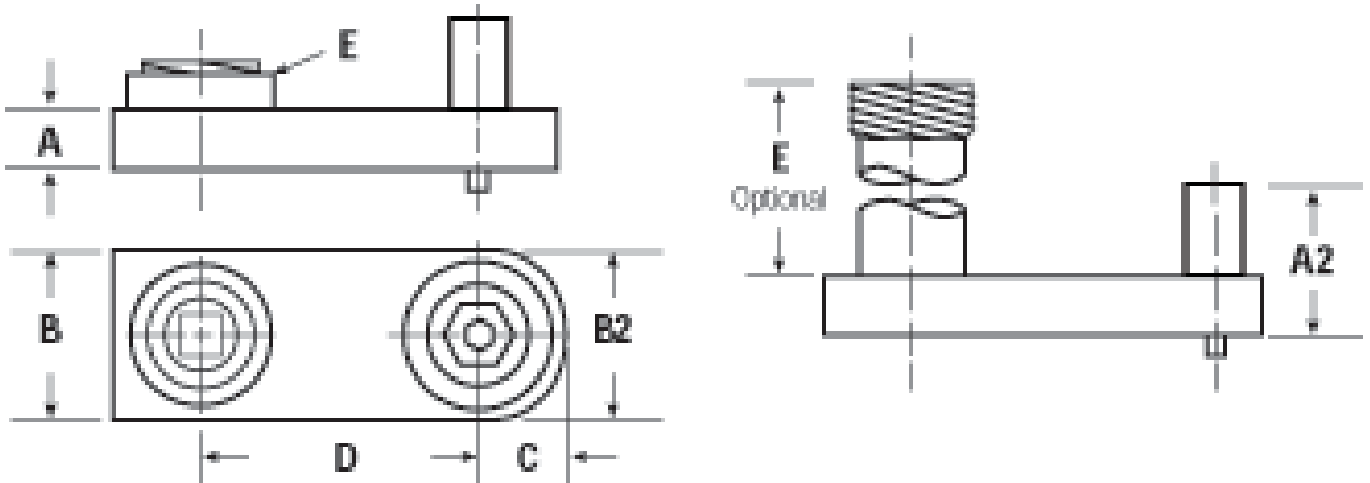
ZIP: _____

Country: _____

Phone: _____

Fax: _____

Email: _____



A		INCHES		MM	A2		INCHES		MM
B		INCHES		MM	B2		INCHES		MM
C		INCHES		MM	Hex Size		INCHES		MM
D		INCHES		MM	Hex	<input type="checkbox"/> 6 Point <input type="checkbox"/> 12 Point Other: _____			
E	Standard: Size Depends on Tool Selected				Hex Extended		IN.		MM
Opt. Extension		INCHES		MM	Bit Travel		IN.		MM
					Prevailing Torque				

If Necessary, Can A Sample of The Part Be Sent for Our Review?

Yes

No

Hold-and-Drive Quote Request Form PAGE 2 of 2	QUOTE NUMBER	DATE

Fastener Torque Requirement (Fill in one only):

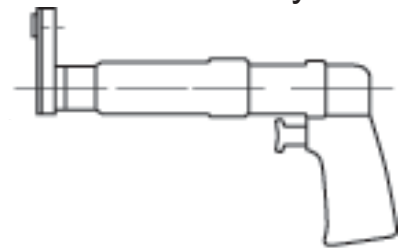
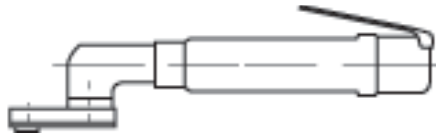
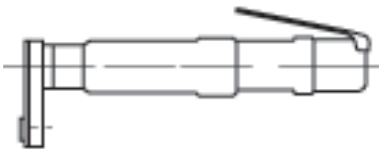
Inch/lb.	Foot/lb.	NM	KG/CM
Is This Fastener Application: <input type="checkbox"/> Hard Joint <input type="checkbox"/> Medium Joint <input type="checkbox"/> Soft Joint			

POWER TOOL PREFERENCE

In-Line (L) Style

Right Angle Style

Pistol Style



SQUARE DRIVE


1/4" 3/8" 1/2" 5/8" 3/4" 1" Other:

Manufacturer:	
Model Number:	

Air Electric Transducerized? Yes No

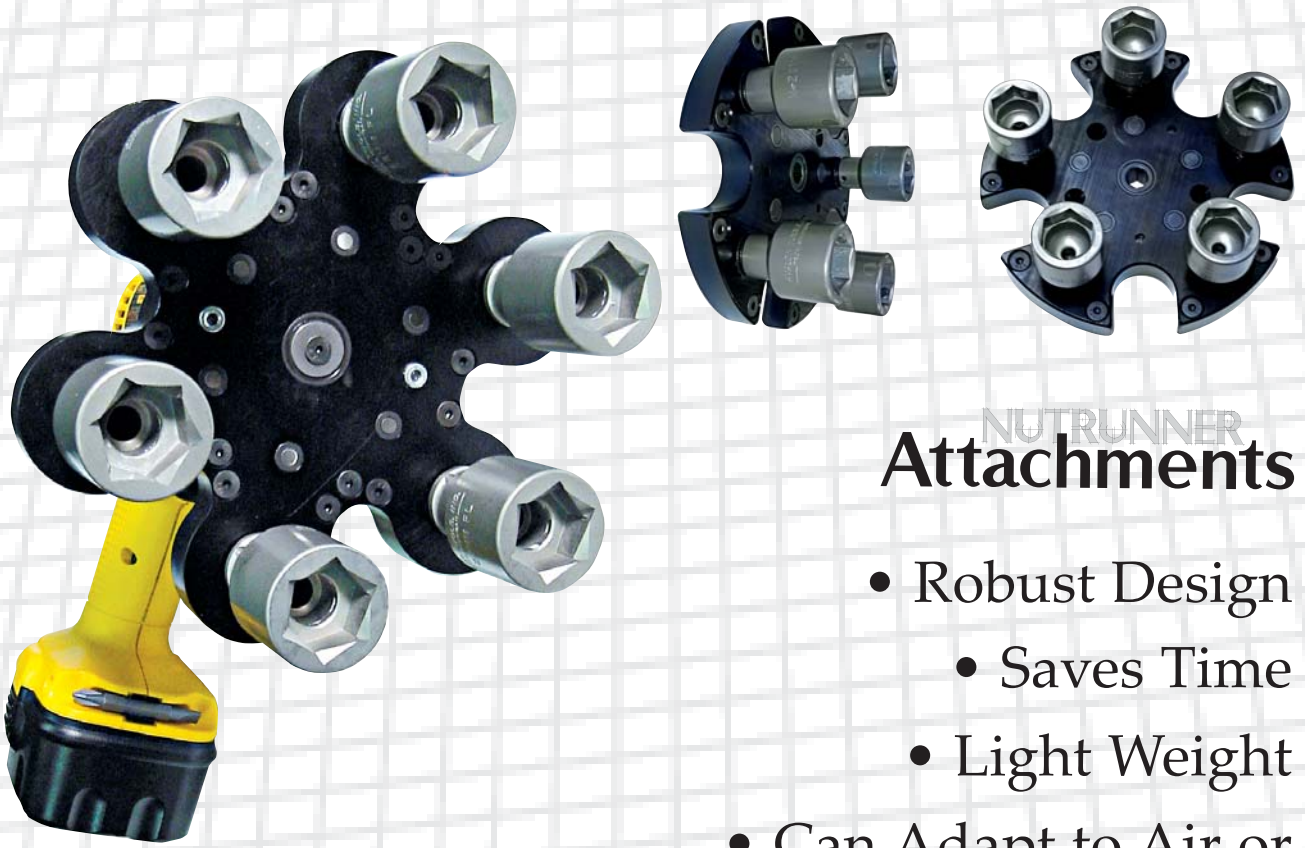
Source: In-House Direct Distributor Jemms-Cascade

Quantity of Jemms Units to Be Quoted: <input type="checkbox"/> 12 <input type="checkbox"/> 6 <input type="checkbox"/> 3 Other:	
Part Number From Catalog (If Available):	Page Number:

Notes/Comments/Special Instructions:


Multi Spindle Nut Starter

DOBCO
EQUIPMENT LTD



NUTRUNNER Attachments

- Robust Design
 - Saves Time
 - Light Weight
- Can Adapt to Air or Battery Tools
- Can Be Built To Suit Any Configuration

SAVE Time by Eliminating Individual Run-Downs

The Good Tool Group
JEMMS
CASCADE INC.

Test Our Efficiency

In-house design staff creates custom tools for special applications.

1886 Larchwood Dr. • Troy, MI 48083
Fax (248) 526-0019 • www.jemms-cascade.com

(248) 526-8100

Whip-less Extensions

PATENTED

DOBCO
EQUIPMENT LTD



NUTRUNNER Attachments

Reduces Vibrations Up To 90%
on any Power Tool Application

- Minimizes Torque Loss
- Lightweight, Ergonomic, Superior Design
- Available in A Full Range of Sizes
 - Mount To Power Tool of Your Choice
 - Extends Power Tool Life
- Specials Quoted on Request

Great for Right Angle,
In-line and Pulse
Tool Applications

Avoid injuries by contacting us for
specifications and ordering information

The Good Tool Group
JEMMS
CASCADE INC.

Test Our Stability

In-house design staff creates custom tools for special applications.

Whip-less Extension Variations

PATENTED



Whip-less Extension

Drive Shaft Description	Drive Shaft Number	Drive Shaft Description	Drive Shaft Number
3/8 x 3"	DRA3P	1/2 x 4"	DRB4P
3/8 x 4"	DRA4P	1/2 x 5"	DRB5P
3/8 x 5"	DRA5P	1/2 x 6"	DRB6P
3/8 x 6"	DRA6P	1/2 x 7"	DRB7P
3/8 x 7"	DRA7P	1/2 x 8"	DRB8P
3/8 x 8"	DRA8P	1/2 x 9"	DRB9P
3/8 x 9"	DRA9P	1/2 x 10"	DRB10P
3/8 x 10"	DRA10P	1/2 x 11"	DRB11P
3/8 x 11"	DRA11P	1/2 x 12"	DRB12P
3/8 x 12"	DRA12P	1/2 x 14"	DRB14P
3/8 x 14"	DRA14P	1/2 x 16"	DRB16P
3/8 x 16"	DRA16P	1/2 x 18"	DRB18P
3/8 x 18"	DRA18P		

*Up to 32" extensions available.

** Square size available up to 1"

*** Available for pulse, pistol and in-line tools, with Ball Detent, Hex drive, Length, etc.

See our Sliding Spindle page for additional info.

Examples :

Atlas C/S Distance	Whip-Less Support Number
13.5	HSGB28
18	HSGB28
20	HSGB4
25	HSGB5

Cleco Angle Head	Whip-Less Support Number
AL3	HSGE30
AM3-Air Tool	HSGE28
AM3-DC Tool	HSGF2
AX3	HSGE25
AZ3	HSGE6
AM4	HSGF2-B
AH4	HSGF6
AZ4	HSGE6-B
MH4	HSGF4

If your preference of power tool is not shown, please call for information.



Test Our Stability

In-house design staff creates custom tools for special applications.

1886 Larchwood Dr. Troy, MI 48083
 Fax (248) 526-0019 www.jemms-cascade.com

(248) 526-8100

Sliding Spindle



NUTRUNNER Attachments

- Durable
- Smooth Movement
- Slim Design
- Can Be Made To Fit All Brands and Styles of Tools
- Travel from 1/4 to 2"
- Based On Our Patented Whip-less Design

Great for Multi-Spindle Applications

Avoid injuries by contacting us for specifications and ordering information

The Good Tool Group
JEMMS
CASCADE INC.

Test Our Ingenuity

In-house design staff creates custom tools for special applications.

Weather Strip Attachment

PATENTED

DOBCO
EQUIPMENT LTD



NUTRUNNER Attachments

- Manufactured to Fit Any Size Weather Seal
 - Long Life
- Various Roller Configurations
- Manufactured to Fit Most Power Tools
 - Smooth Running

The Good Tool Group
JEMMS
CASCADE INC.

Test Our Functionality

In-house design staff creates custom tools for special applications.

1886 Larchwood Dr. • Troy, MI 48083
Fax (248) 526-0019 • www.jemms-cascade.com

(248) 526-8100

23

Indexable Housing

DOBCO
EQUIPMENT LTD



NUTRUNNER Attachments

- Aerospace and Automotive Applications
- Ergonomic Design
- Operator Adjustable in 30° Increments
- Available in Different Sizes for Torques 0 to 200 Inch lbs.

The Good Tool Group
JEMMS
CASCADE INC.

Aerospace Applications

In-house design staff creates custom tools for special applications.



- Tube Nuts
- Standard Heads
- Also Available In 20° Configurations

Six Configurations Cover Torque Ranges from 0 to 150 N.M

20°



- Tube Nuts
- Standard Heads

Six Configurations Cover Torque Ranges from 0 to 40 N.M

The Good Tool Group
JEMMS
CASCADE INC.

Test Our Efficiency

In-house design staff creates custom tools for special applications.

1886 Larchwood Dr. • Troy, MI 48083
Fax (248) 526-0019 • www.jemms-cascade.com

(248) 526-8100



In-Line / 20° Attachments PAGE 1 of 2

QUOTE NUMBER:

DATE:

Name:

Company:

Street or P.O. Box:

City:

State:

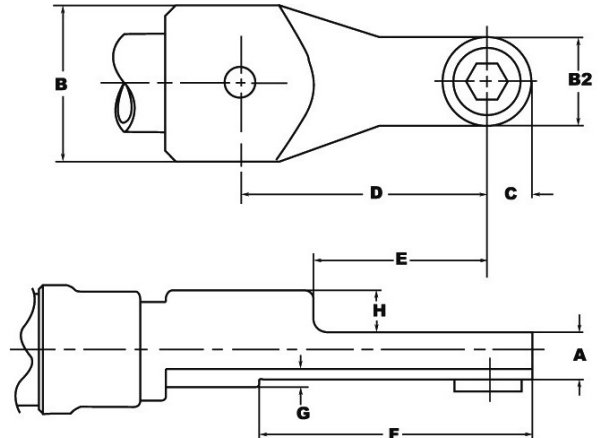
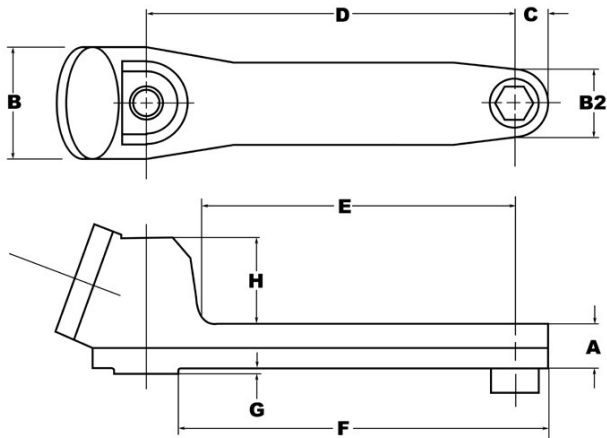
ZIP:

Country:

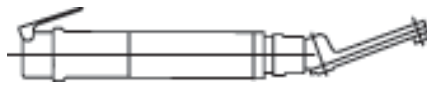
Phone:

Fax:

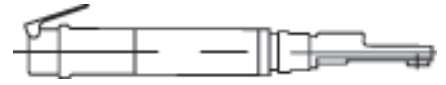
Email:



Please Check One:



20°



In-Line

A		INCHES		MM	F		INCHES		MM
B		INCHES		MM	G		INCHES		MM
B2		INCHES		MM	H		INCHES		MM
C		INCHES		MM	Hex Size		INCHES		MM
D		INCHES		MM	Hex	<input type="checkbox"/> 6 point <input type="checkbox"/> 12 point Other:			
E		INCHES		MM	Hex Magnetized?	<input type="checkbox"/> Yes <input type="checkbox"/> No			

If Necessary, Can A Sample of The Part Be Sent for Our Review? Yes No

In-Line / 20° Attachments PAGE 2 of 2	QUOTE NUMBER	DATE

Fastener Torque Requirement (Fill in one only):

Inch/lb.	Foot/lb.	NM	KG/CM
Is This Fastener Application: <input type="checkbox"/> Hard Joint <input type="checkbox"/> Medium Joint <input type="checkbox"/> Soft Joint			

Manufacturer:	
Model Number:	

Air Electric Transducerized? Yes No

Source: In-House Direct Distributor Jemms-Cascade

Quantity of Jemms Units to Be Quoted: <input type="checkbox"/> 12 <input type="checkbox"/> 6 <input type="checkbox"/> 3 Other:	
Part Number From Catalog (If Available):	Page Number:

Notes/Comments/Special Instructions:





NUTRUNNER Attachments

- Extremely Low Profile
- Positive Reverse Stop at Open Position
- Mounts to Most Power Tools Without Weld or Special Adapter
- Consistent Torque Repeatability
 - Torque Range Up To 200 N.M.
- Built-in Lube Points

Ask About Our
Hold-and-Drive Tube Nut

The Good Tool Group
JEMMS
CASCADE INC.

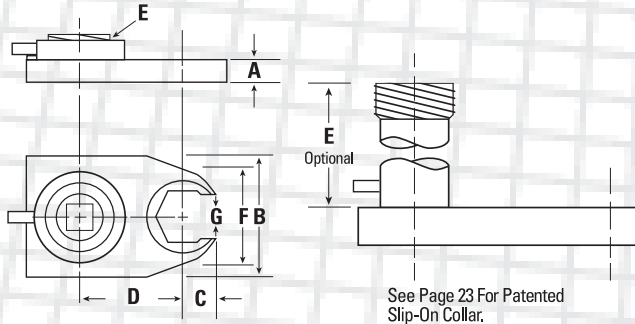
Test Our Durability

In-house design staff creates custom tools for special applications.

Tube Nut Variations

PATENTED

DOBCO
EQUIPMENT LTD



NUTRUNNER
Attachments

Tube Nut Style Nutrunner Attachment

Part No.	Max Torque (Soft Joint)		Any Size Hex Up To**		A		B May Be Reduced		C		D		F		G
	n.m.	ft. lb.	mm	inch	mm	inch	mm	inch	mm	inch	mm	inch	mm	inch	MAX
TN1_ _ _ _	16	12	13	1/2	12.7	1/2	44.45	1 3/4	15.2	.600	35.3	1.388	25.4	1	.375
TN5_ _ _ _	20	15	15	5/8	12.7	1/2	59.8	2	15.9	.625	38	1.50	34.9	1 3/8	.350
TN3_ _ _ _	35	26	21	13/16	12.7	1/2	50.8	2	18.7	.737	45.7	1.800	38.1	1 1/2	.350
TN4_ _ _ _	60	44	32	1 1/4	14.3	9/16	63.5	2 1/2	26.7	1.050	63.6	2.505	54.0	2 1/8	.625
TN7_ _ _ _	25	18	13	1/2	15.9	5/8	38.1	1.500	12.5	.490	74.9	2.950	31.8	1.250	.310
TN8_ _ _ _	35	26	23	29/32	12.7	1/2	50.8	2	20.3	.800	47.8	1.882	38.1	1 1/2	.550
TN9_ _ _ _	40	29	22	7/8	15.2	.600	41.9	1.650	18.8	.740	42.8	1.687	41.9	1.650	.400
TN14_ _ _	60	44	32	1 1/4	14.3	9/16	76.2	3	26.7	1.050	51.2	2.015	57.2	2 1/4	.710
TN17_ _ _	20	15	12	7/16	14.3	9/16	44.45	1 3/4	12.8	.503	27.2	1.070	31.8	1 1/4	.300

‡ Numerous variations are available. If required unit is not listed, contact our plant.

Lubricate once per shift. Check cover plate screws once per shift.

All units can be mounted to the power tool of your choice without welding.

* Stall operation on any joint other than soft may cause higher maintenance.

○ Special Automatic Tie-Rod Adjustment attachment available. Contact your alignment specialist or our plant.

The Good Tool Group
JEMMS
CASCADE INC.

Test Our
Durability

In-house design staff creates custom tools for special applications.



Tube Nut Quote Request Form PAGE 1 of 2

QUOTE NUMBER: _____

DATE: _____

Name: _____

Company: _____

Street or P.O. Box: _____

City: _____

State: _____

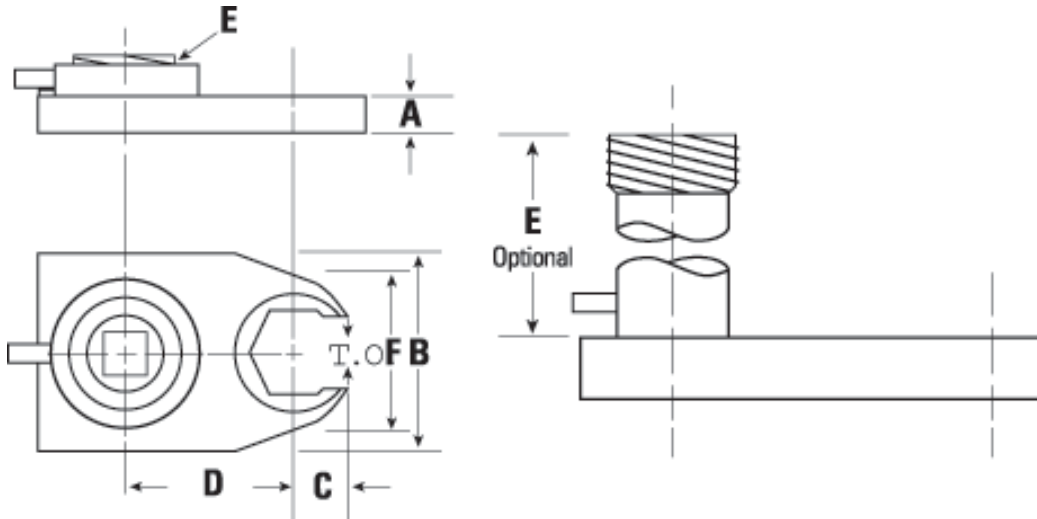
ZIP: _____

Country: _____

Phone: _____

Fax: _____

Email: _____



Dimensions — Give Maximum Allowable
Please Refer to The Diagram

A		INCHES		MM	F		INCHES		MM
B		INCHES		MM	T.O.		INCHES		MM
C		INCHES		MM	Tube Diameter		INCHES		MM
D		INCHES		MM	Hex Size		INCHES		MM
E		INCHES		MM	Hex Extended		INCHES		MM
Optional Extension		INCHES		MM	Square Drive		INCHES		MM

If Necessary, Can A Sample of The Part Be Sent for Our Review?

Yes

No

Tube Nut Quote Request Form <small>PAGE 2 of 2</small>	QUOTE NUMBER	DATE

Fastener Torque Requirement (Fill in one only):

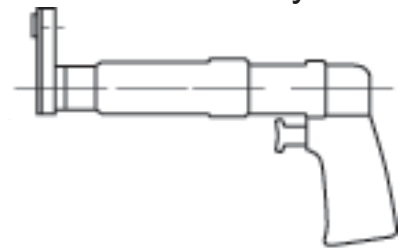
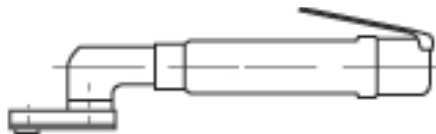
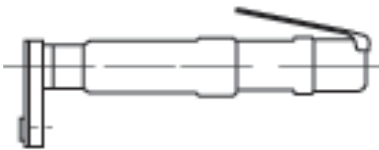
Inch/lb.	Foot/lb.	NM	KG/CM
Is This Fastener Application: <input type="checkbox"/> Hard Joint <input type="checkbox"/> Medium Joint <input type="checkbox"/> Soft Joint			

POWER TOOL PREFERENCE

In-Line (L) Style

Right Angle Style

Pistol Style



SQUARE DRIVE

1/4" 3/8" 1/2" 5/8" 3/4" 1" Other:

Manufacturer:	
Model Number:	

Air Electric Transducerized? Yes No

Source: In-House Direct Distributor Jemms-Cascade

Quantity of Jemms Units to Be Quoted: <input type="checkbox"/> 12 <input type="checkbox"/> 6 <input type="checkbox"/> 3 Other:	
Part Number From Catalog (If Available):	Page Number:

Notes/Comments/Special Instructions:





QUOTE NUMBER:

DATE:

Name:

Company:

Street or P.O. Box:

City:

State:

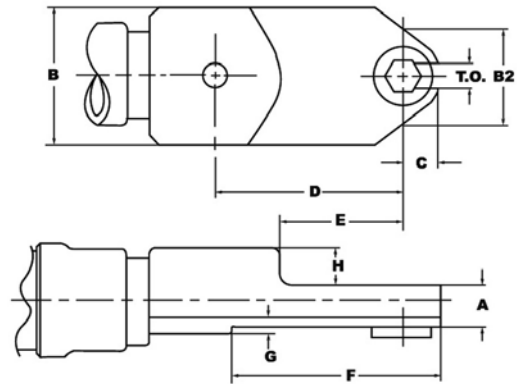
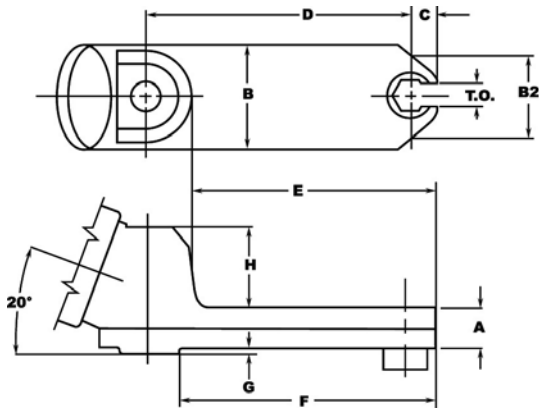
ZIP:

Country:

Phone:

Fax:

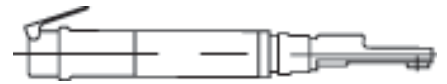
Email:



Please Check One:



20°



In-Line

A		INCHES		MM	G		INCHES		MM
B		INCHES		MM	H		INCHES		MM
B2		INCHES		MM	T.O.		INCHES		MM
C		INCHES		MM	Tube Diameter		INCHES		MM
D		INCHES		MM	Hex Size		INCHES		MM
E		INCHES		MM	Hex	<input type="checkbox"/> 6 point <input type="checkbox"/> 12 point Other:			
F		INCHES		MM	Hex Magnetized?	<input type="checkbox"/> Yes <input type="checkbox"/> No			

If Necessary, Can A Sample of The Part Be Sent for Our Review? Yes No

Safety Sleeves

PATENTED

DOBCO
EQUIPMENT LTD



NUTRUNNER Attachments

Many people have suffered serious injuries to their gloved hands due to the pinching problem that exists on most nutrunner tools with sockets. Jemms-Cascade Inc. has a pinch-point protector which provides safety, efficiency and smooth running to your nutrunner applications. Our Safety Sleeve is modeled after our patented whip-less extensions.

- Avoid Injuries
- Stabilizes Sockets
- Protects Bare or Gloved Hands from Pinch Point

Avoid injuries by contacting us for specifications and ordering information

The Good Tool Group
JEMMS
CASCADE INC.

Test Our Simplicity

In-house design staff creates custom tools for special applications.

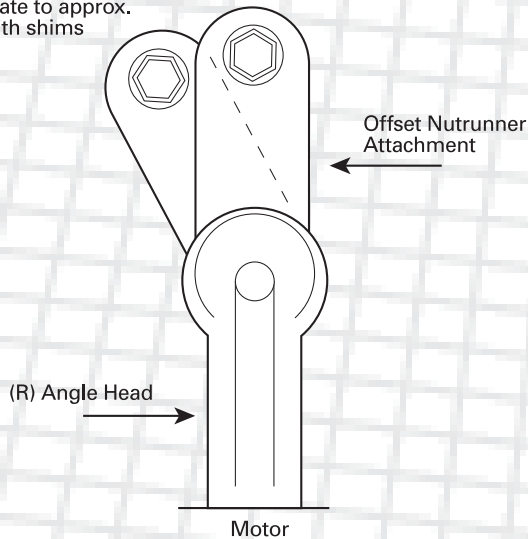
1886 Larchwood Dr. • Troy, MI 48083
Fax (248) 526-0019 • www.jemms-cascade.com

(248) 526-8100

35

Mounting Procedures, Original

Hand tighten and orientate to approx. 10° with shims



- Remove pin from square drive spindle.
- Materials needed:
 - bench vice
 - shims (.003, .005, .010)
- Shims are necessary to maintain proper bevel gear mesh of right angle head.
- Hand tighten and orientate to within approximately 10° of final location with shims
- Secure offset (by sides only) in bench vise, **DO NOT CRUSH**.
- Move tool with right angle to final lock down position
- **CAUTION:** Never use hammer or any impacting device. Use proper wrenching methods only.
- **TO REMOVE:** Reverse above procedure.

Mounting Procedures, Two-Piece Adapter

- Remove pin from square drive spindle.
- Remove retaining cap at square drive spindle while spindle is facing up (There are loose ball bearings in the right angle head.)
- Place the two shims over the minor threaded portion of the double threaded adapter and thread into the right angle head. Tighten securely using a spanner wrench.
- Hand tighten and orientate Jemms Attachment to within approximately 10° of final location with shims. Secure offset (by sides only) in bench vise. **DO NOT CRUSH**. Move tool with right angle head to final lock-down position.
- **CAUTION:** Never use hammer or any impacting device. Use proper wrenching methods only.
- **TO REMOVE:** Reverse above procedure.

DOBCO
EQUIPMENT LTD

The Good Tool Group

JEMMS
CASCADE INC.

NUTRUNNER
Attachments

In-house design staff creates custom tools for special applications.

Recommendations for Motor Types & Maintenance Procedures

1. Maximum spindle speed 500 rpm on soft joint.
2. Determine what type of unit being used.
Initial torque loss:

3 Gear	=	25% initial average	} Efficiency improves with use.
5 Gear	=	45% initial average	
Tube-Nut	=	35% initial average	

(w/optional bearing pack, reduce loss up to 30%)
3. For hard to medium joints, use a torque control or mechanically adjustable clutch type power tool only. The use of a stall type tool on a hard/harder joint may cause damage or excessive wear.
4. Before installing Jemms offset nutrunner, test motor torque output. CAUTION: set test apparatus to match the type of joint (hard, medium or soft) that is on the line.
 - 4A. Run down a sequence of 20-25 cycles.
Adjust motor output as needed to produce required final torque plus { + }

25%	=	3 Gear Unit
45%	=	5 Gear Unit
35%	=	Tube-nut
 - 4B. Remove square drive/bearing cap (most power tools) and thread on Jemms unit using a bench vice and proper wrenching methods only. Never hit or beat with any impacting device. Use shims for desired orientation.
5. Run down a sequence of 20-25 cycles, then adjust torque as needed on the motor. For stall tools adjust air pressure in 5 psi increments.
6. Do not feed more torque into the Jemms unit than it is rated for. Operating at or beyond maximum torque rating may cause higher maintenance.
7. **Lubricate once a shift. (Alemite #Z-737 fitting)**
8. **Check cover plate screws once a shift to insure full seating. If cover plate is loose excessive wear or damage may occur.**
9. Pulse tools may cause high maintenance.

DOBCO
EQUIPMENT LTD

The Good Tool Group

JEMMS
CASCADE INC.

NUTRUNNER
Attachments

In-house design staff creates custom tools for special applications.

1886 Larchwood Dr. • Troy, MI 48083
Fax (248) 526-0019 • www.jemms-cascade.com

(248) 526-8100

37

WARRANTY



J.C.I. Jemms-Cascade Inc. products are WARRANTED to be free of defect in material and craftsmanship for 1 (one) year to original buyer from J.C.I. or its authorized representatives. This warranty applies only to products manufactured by J.C.I. or its affiliates. **This warranty DOES NOT APPLY to products that have been abused, misused, modified, neglected, improperly operated, poorly maintained or serviced with substandard parts.** Product must be returned with our authorization, freight pre-paid for our inspection. Any replaced parts will become the property of J.C.I.

THERE ARE NO OTHER WARRANTIES EXPRESSED OR IMPLIED. J.C.I. SHALL NOT BE LIABLE FOR INCIDENTAL, CONSEQUENTIAL OR SPECIAL DAMAGES, OR ANY OTHER COSTS OR EXPENSES EXCEPTING ONLY THE COST OR EXPENSE OF REPAIR OR REPLACEMENT OF J.C.I. PRODUCT AS STATED ABOVE.

TERMS

Net 30

FREIGHT

F.O.B. OUR PLANT - TROY, MI USA

Terms and Prices subject to change without notice.

**CUSTOMER SATISFACTION IS OUR PRIMARY OBJECTIVE,
WHICH WE OBTAIN THROUGH PERFORMANCE.**

*Actual amount of cycles is dependent upon power tool used, set up, torque requirement, speed, joint and operator handling. Cycle life varies with any given unit. To date, a number of different attachments have been independently durability tested a minimum of 250,000 cycles each in a controlled lab environment. Should you have any questions in reference to the amount of cycles you can expect in your particular application, contact our plant.

In-house design staff creates custom tools for special applications.